



Exchange  
for good

# Quick Start Guide

## 1 – Crea un nuovo progetto

Seleziona un pattern Liquido-Liquido o Liquido-Vapore



Calculation type: Selection  
 Calculation mode: Standard Mode  
 Type of PHE: GPHE (Selected)  
 Design standard: PED 2014/68/EU  
 Product line: Standard  
 Design pressure (PS): 10 bar  
 Design temperature (TS): 80 °C  
 Plates material: AISI 316L (EN 1.4404)  
 Gaskets material: NBR  
 Frame material: Carbon steel

Capacity: 100 kW  
 Total oversizing: %  
 Heat transfer area: m<sup>2</sup>

Heat transfer coeff. (calc. / req.): W/(m<sup>2</sup> K)  
 LMTD: °C  
 Fouling factor (calc.): (m<sup>2</sup> K)/W

**COLD SIDE**  
 Fluid: Water  
 Fluid flow rate: m<sup>3</sup>/h  
 INLET temperature: °C 50  
 OUTLET temperature: °C 60  
 Pressure drop (req. / calc.): kPa 50  
 Operating pressure: bar G 5  
 Fouling factor (required): (m<sup>2</sup> K)/W 0

**HOT SIDE**  
 Fluid: Water  
 Fluid flow rate: m<sup>3</sup>/h  
 INLET temperature: °C 80  
 OUTLET temperature: °C 70  
 Pressure drop (req. / calc.): kPa 50  
 Operating pressure: bar G 5  
 Fouling factor (required): (m<sup>2</sup> K)/W 0

Fixed No. of passes: 1  
 Pressure drop filter %: 0  
 Price filter %: 0

## 2 – Configura il tuo progetto



Imposta i dati e la configurazione richiesta



Calculate the solutions

## 3 – Seleziona il GPHE opportuno

Seleziona una soluzione dalla lista proposta



Ottimizza la tua soluzione, se necessario

List Price	GEOMETR Y	Plates A [%]	Connectio n	No. of pas ses	No. of plat es	Thickness [mm]	Heat trans fer area [m <sup>2</sup> ]	Total over sizing (cal c.) [%]	PD (cold si de) [kPa]	PD (hot si de) [kPa]	PED	W x H x L [mm]
581.30	PD02H-A	100	DN32 / J-J	1 - 1	27	0.4	0.52	23.05	43.22	44.36	-	200 x 500 x 251
858.80	PD04J-A	100	DN32 / J-J	1 - 1	33	0.4	1.27	117.82	46.42	48.01	-	200 x 470 x 351
1172.40	PD07H-B	0	DN50 / J-J	1 - 1	9	0.4	0.54	13.31	26.89	26.87	-	310 x 470 x 400
1217.60	PD07H-M	53	DN50 / J-J	1 - 1	11	0.4	0.70	84.95	45.27	45.56	-	310 x 470 x 400
1332.20	PD07H-A	100	DN50 / J-J	1 - 1	17	0.4	1.16	200.79	42.00	42.50	-	310 x 470 x 400
1402.70	PD10H-B	0	DN63 / J-J	1 - 1	7	0.4	0.59	10.29	23.06	23.41	-	385 x 270 x 400

Capacity: 100 kW  
 Total oversizing: 171.32 %  
 Heat transfer area: 1.28 m<sup>2</sup>

Heat transfer coeff. (calc. / req.): W/(m<sup>2</sup> K) 13074 / 3934  
 LMTD: °C 70  
 Fouling factor (calc.): (m<sup>2</sup> K)/W 0.00095057

**COLD SIDE**  
 Fluid: Water  
 Fluid flow rate: m<sup>3</sup>/h 8.7371  
 INLET temperature: °C 50  
 OUTLET temperature: °C 60  
 Pressure drop (req. / calc.): kPa 50 / 46.62  
 Operating pressure: bar G 5  
 Fouling factor (required): (m<sup>2</sup> K)/W 0

**HOT SIDE**  
 Fluid: Water  
 Fluid flow rate: m<sup>3</sup>/h 8.8012  
 INLET temperature: °C 80  
 OUTLET temperature: °C 70  
 Pressure drop (req. / calc.): kPa 50 / 48.01  
 Operating pressure: bar G 5  
 Fouling factor (required): (m<sup>2</sup> K)/W 0

Pressure drop (connections): kPa 7.8361  
 Fluid velocity (connections): m/s 2.6716  
 Fluid velocity (channels): m/s 0.5227  
 Reynolds: 5329  
 Heat transfer coefficient: W/(m<sup>2</sup> K) 27620  
 Shear index (Hot Rec: <1, Cold >2): 5

No. of plates: 55  
 No. of passes: 1

Per ulteriori informazioni, fai riferimento al Manuale dell'Utente



Exchange  
for good

#### 4 – Seleziona le connessioni, le opzioni e gli accessori



Seleziona le connessioni, le opzioni e gli accessori dalla lista

LEAD TO OFFER

Aggiungi la tua selezione ad un'offerta esistente oppure creane una nuova

OPTIONS / ACCESSORIES			
<b>PLATE HEAT EXCHANGER (Connections incl.)</b>			
SE#0040+033A00PNV0011			€ 838,80
<b>OPTIONS</b>			
<input type="checkbox"/>	PORTS (hot side / cold side)	J1 : Threaded nozzles AISI 316 Threaded nozzles AISI 316	€ 63,60
<input type="checkbox"/>	AISI 304 tightening bolts		€ 157,00
<input type="checkbox"/>	AISI 304 guiding bars		€ 97,00
<input type="checkbox"/>	Special coating / RAL 5003		€ 140,00
<input type="checkbox"/>	AISI 304 tightening bolts with brass nuts		€ 282,00
<b>ACCESSORIES</b>			
<input type="checkbox"/>	Thermal insulation TF		€ 220,00
<input type="checkbox"/>	Plate pack protection sheet (AISI 304)		€ 243,00
<input type="checkbox"/>	Drip tray with drainage (AISI 304)		€ 169,00
<input type="checkbox"/>	Brackets (galvanized carbon steel)		€ 65,00
<input type="checkbox"/>	No. 4 counter-flanges (stud bolts kit incl.)		€ 134,00
<input type="checkbox"/>	Nameplate in stainless steel		€ 180,00
<input type="checkbox"/>	Hydraulic pressure test (without drying)		€ 344,00
<input type="checkbox"/>	..		0
<input type="checkbox"/>	..		0
<input type="checkbox"/>	..		0
<input type="checkbox"/>	..		0
<b>TOTAL</b>			
Plate Heat Exchanger (Options incl.)	LIST PRICE	DISCOUNT	NET PRICE
	€ 838,80	0	838,80
Accessories	€ 0,00	0	0
<b>PLATE HEAT EXCHANGER + ACCESSORIES</b>	<b>€ 838,80</b>	<b>0</b>	<b>838,80</b>
<b>REMARKS</b>			

#### OFFER MANAGEMENT

Public

Save Print

**OFFER DATA**

Offer number:

Date: 29/09/2020

Offer description:

RDO:

Notes:

Customer:

Payment:

Delivery conditions:

Delivery time:

Transportation cost (€):

Offer validity (days):

**PRICES AND DISCOUNTS**

TOTAL NET PRICE (€): 0,00

Extra-discount (%): 0

TOTAL OFFER NET PRICE (€): 0,00

**PRINT PRICES**

UNIT LIST PRICE

UNIT NET PRICE

TOT. LIST PRICE

TOT. NET PRICE

#### 5 – Gestisci la tua offerta



Imposta i dati richiesti



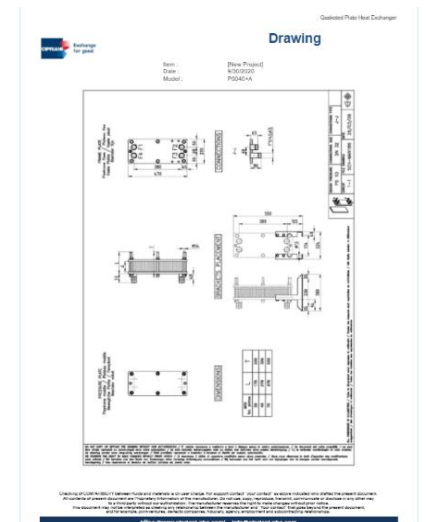
Lege l'offerta ad un cliente esistente oppure creane uno nuovo

#### 6 – Salva il tuo lavoro!



Quando completato, stampa o salva in Word o in PDF l'offerta e la scheda tecnica

Offer Datasheet						
Customer contact:	email:	name:	Company:	Address:	City:	Country:
RDO:	email:	name:	Company:	Address:	City:	Country:
Customer Ref.:	email:	name:	Company:	Address:	City:	Country:
ITEM	DESCRIPTION	UNIT PRICE (€)	UNIT NET (€)	QTY	TOT. PRICE (€)	TOT. NET (€)
Item Project	Show Project	SEB070-0300PNV0011	1.172,40	1	1.172,40	1.172,40
Item Project	Show Project	SEB020-02160PNV0011	581,20	1	581,20	581,20
		TOTAL AMOUNT (€)			1753,6	
		Offer heat exchanger (€)				1753,6
		Extra-discount (%)			0	
		TOTAL NET AMOUNT (€)			1753,6	
<b>OFFER CONDITIONS</b>						
Offer validity (days):						
Delivery conditions:						
Delivery time:						
Transportation cost (€):						
<b>REMARKS</b>						



Per ulteriori informazioni, fai riferimento al Manuale dell'Utente