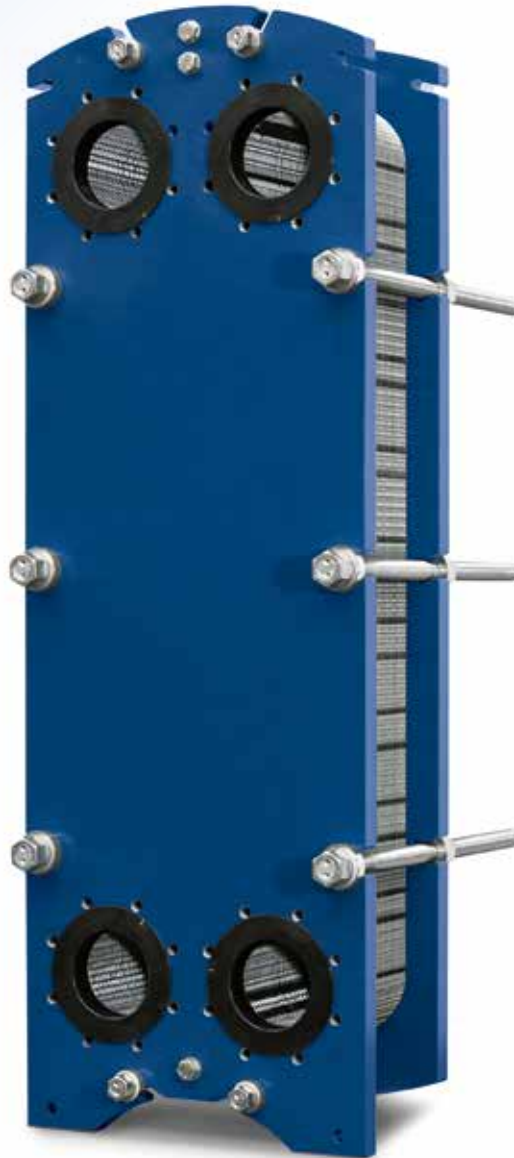


**Exchange
for good**

— MADE IN ITALY —



TAILOR MADE
HEAT EXCHANGERS
CIPRIANI

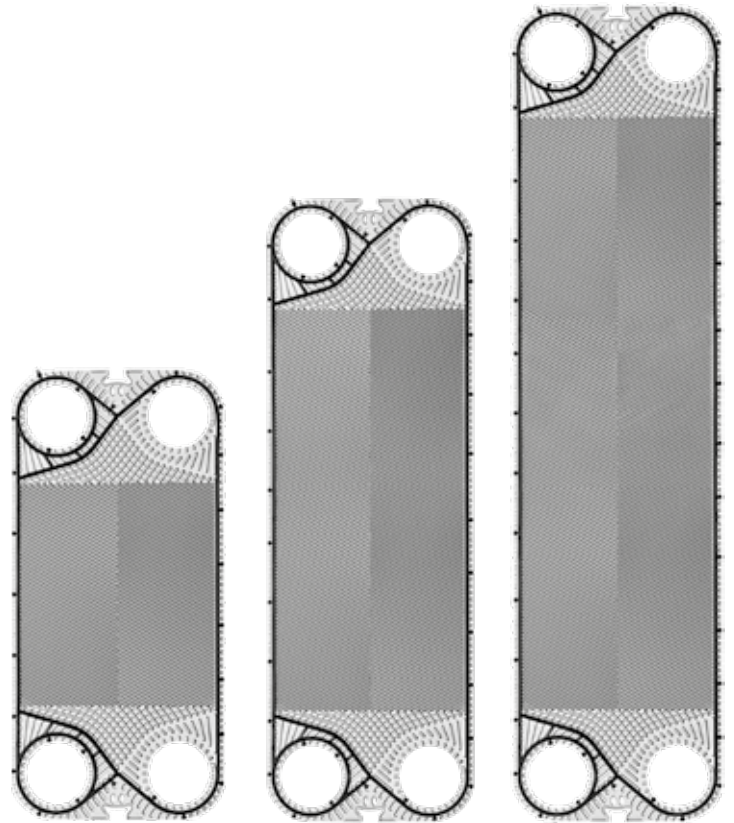
GAMMA PRODOTTI / PRODUCT RANGE DN 150+

*Standard o Personalizzabili
Standard or Customized*



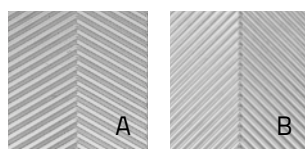
Exchange
for good

TAILOR MADE
HEAT EXCHANGERS
CIPRIANI



| Gamma Prodotti | Product Range | P400+ | | P600+ | | P900+ | |
|---|---|-------|----|----------|----|-------|----|
| | | | | | | | |
| Area di scambio [m ²] | Exchange area [m ²] | 0,39 | | 0,645 | | 0,9 | |
| Larghezza [mm] | Width [mm] | | | 500 | | | |
| Altezza [mm] | Height [mm] | 1055 | | 1503 | | 1951 | |
| Diametro attacchi | Connections diameter | | | DN150 6" | | | |
| Capacità canale [l] | Channel capacity [l] | 1,122 | | 1,659 | | 2,197 | |
| Quota di serraggio [mm] * | Tightening quote [mm] * | | | 3,1 | | | |
| Peso piastra (con guarnizione) [Kg] * | Plate weight (with gasket) [Kg] * | 1,929 | | 2,858 | | 3,786 | |
| Angolo di corrugazione | Corrugation angle | | | A/B | | | |
| Portata max d'acqua [m ³ /h] | Max. water flowrate [m ³ /h] | | | 380 | | | |
| PS=> Pressione max di esercizio [bar] | PS=> Max working pressure [bar] | 10 | 16 | 10 | 16 | 10 | 16 |

* standard AISI316L 0,5mm



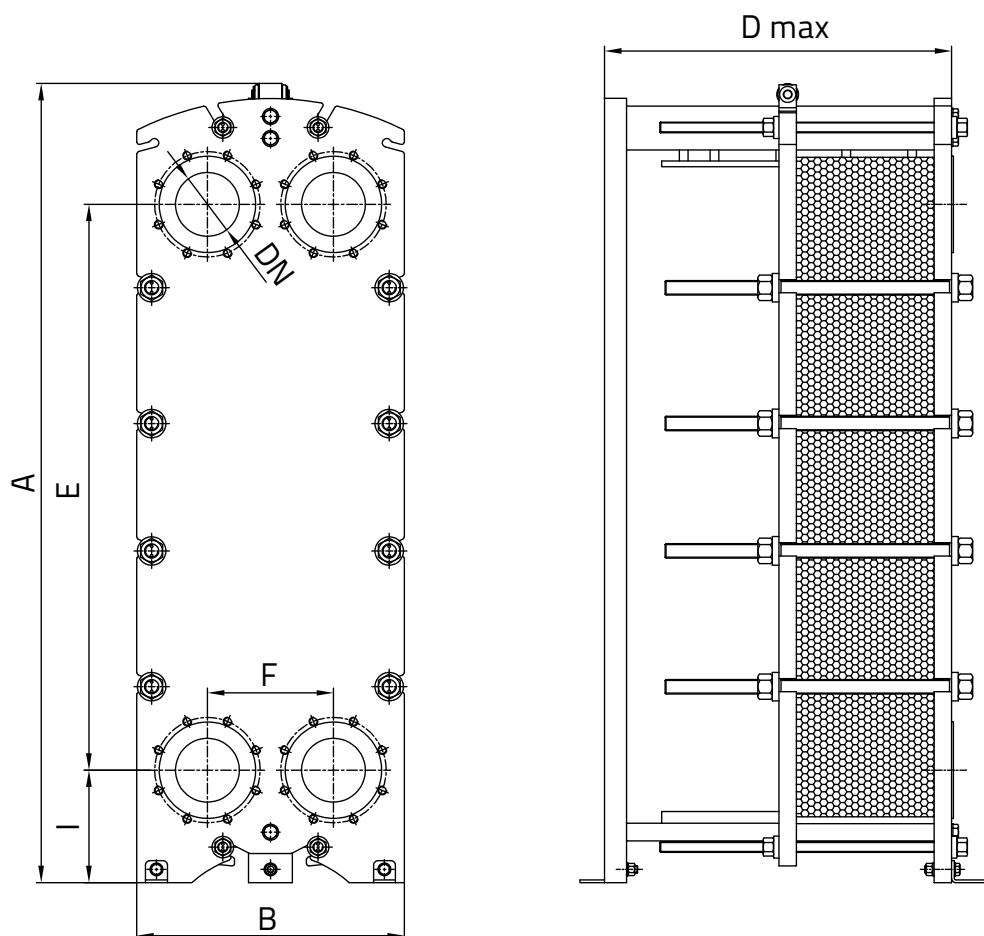
Piastre disponibili in due lunghezze termiche (A/B)

Plates are available in two thermal lengths (A/B)

| | | | | | | |
|------|------|------|------|-------|--------------|-------|
| DN32 | DN50 | DN65 | DN80 | DN100 | DN150 | DN200 |
|------|------|------|------|-------|--------------|-------|

Tutti i dati e disegni nel presente documento possono subire variazioni senza preavviso e non sono vincolanti per il produttore.
All data and drawings herewith described can be changed without prior notice and are not binding for the manufacturer.

DIMENSIONI TELAI / FRAMES DIMENSIONS



| | S400+ | | | | | S600+ | | | | | S900+ | | | | | | |
|--------|----------|------|------|------|------|-------|------|------|------|------|-------------|------|------|------|------|------|--|
| A | 1371 | | | | | 1819 | | | | | 2272 / 2317 | | | | | | |
| B | 609 | | | | | 609 | | | | | 609 | | | | | | |
| E | 840 | | | | | 1288 | | | | | 1736 | | | | | | |
| F | 287 | | | | | 287 | | | | | 287 | | | | | | |
| I | 256 | | | | | 256 | | | | | 256 | | | | | | |
| Np max | 101 | 201 | 301 | 401 | 551 | 101 | 201 | 301 | 401 | 551 | 101 | 201 | 301 | 401 | 551 | 701 | |
| D max | 800 | 1300 | 1800 | 2300 | 3100 | 800 | 1300 | 1800 | 2300 | 3100 | 800 | 1300 | 1800 | 2300 | 3110 | 3930 | |
| DN | DN150 6" | | | | | | | | | | | | | | | | |

Ingombro delle connessioni (C) - Connections dimensions (C)

| | | | |
|-------------|----|----|----|
| A-A B-B U-U | 48 | 48 | 48 |
| C-C E-E V-V | 48 | 48 | 48 |

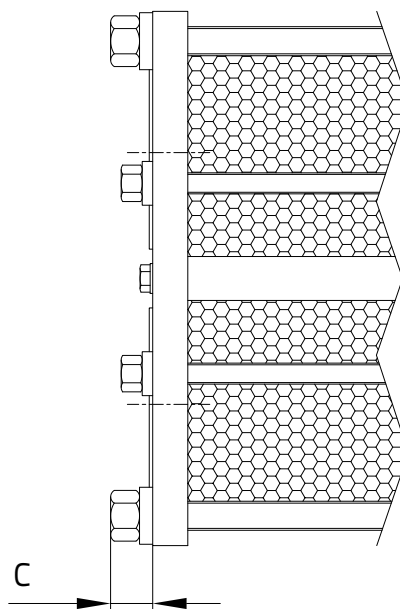
Tutte le dimensioni sono in mm - Np = numero di piastre. All dimensions are in mm - Np = number of plates.

**CONNESSIONI FLANGIATE ISO
ISO STUDED PORTS**

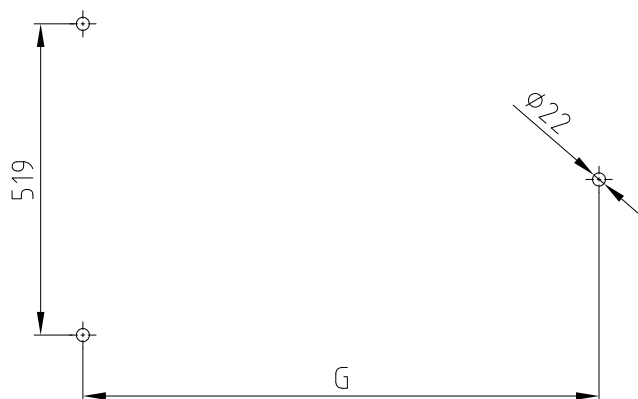
A/B/U

**CONNESSIONI FLANGIATE ANSI
ANSI STUDED PORTS**

C/E/V



PIEDINI / FEET



| | PS10 | PS16 |
|------------------------------|------|------|
| S400+ / S600+ / S900+ | | |
| Max 101p | 866 | 876 |
| Max 201p | 1366 | 1376 |
| Max 301p | 1866 | 1876 |
| Max 401p | 2366 | 2376 |
| Max 551p | 3166 | 3176 |
| Max 701p* | 3983 | 3983 |

*Step 701p disponibile SOLO per S900+.
Step 701p available ONLY for S900+.
Tutte le dimensioni sono in mm. All dimensions are in mm.

| | | S400+ | S600+ | S900+ |
|--|---------------------------------|-------|--------|-------|
| Piastre Plates | AISI 304 | ● | ● | ● |
| | AISI 316L | ● | ● | ● |
| | 254 SMO | ● | ● | ● |
| | Titanio / Titanium | ● | ● | ● |
| Guarnizioni Gaskets | NBR | ● | ● | ● |
| | EPDM Prx. | ● | ● | ● |
| | FPM | ● | ● | ● |
| | HNBR | ● | ● | ● |
| Telai Frames ** | Acciaio Carbonio / Carbon steel | ● | ● | ● |
| | Acciaio inox / Stainless steel | | | |
| Attacchi Connections ** | A / C (Rubber lined) | ● | ● | ● |
| | B / E (AISI316L lined) | ● | ● | ● |
| | U / V (Unlined) | ● | ● | ● |
| Materiali guarnizioni e temperature massime Gaskets material maximum temperatures | | | | |
| NBR | -20 °C | | 110 °C | |
| EPDM Prx. | -20 °C | | 160 °C | |
| FPM | -20 °C | | 200 °C | |
| HNBR | -20 °C | | 160 °C | |

* Le temperature devono essere considerate non applicabili in tutte le condizioni di lavoro.

* The temperatures must be considered not applicable in all working conditions.

** Per configurazioni non standard contattateci. For non-standard configurations please contact us.



Valori **su misura** per voi.
Values **made** for you.

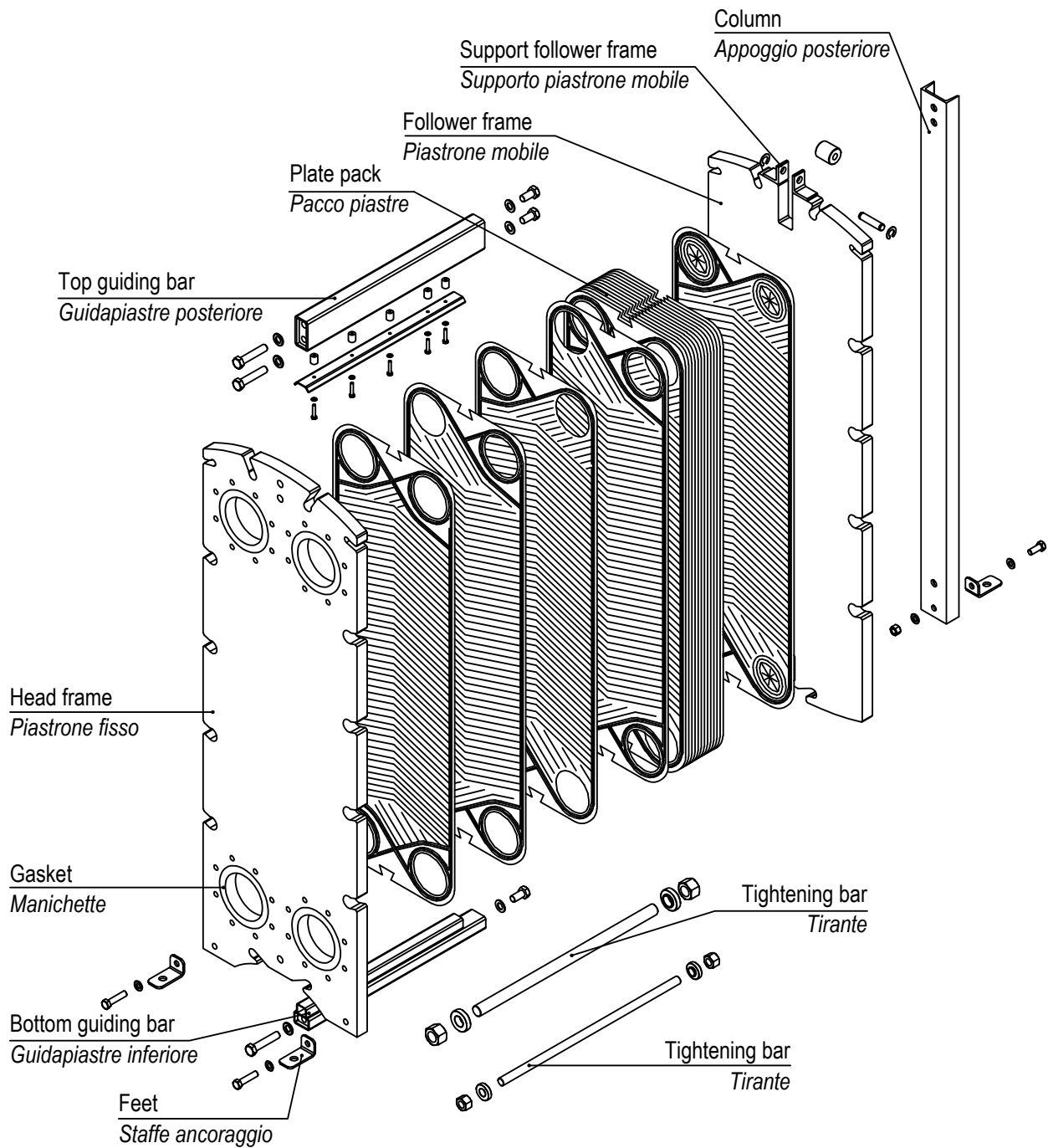
Competenze globali
Global expertise

Flessibilità
Flexibility

Team dedicato
Dedicated team

Standard qualitativi
Quality Standards





CERTIFICATIONS APPROVALS



- ISO EN 9001:2015 European Quality Certificates
- PED 2014/68/UE Pressure Equipment Directive Module B,D1 & D (up to Risk Cat. IV)



- ACS Attestation de Conformité Sanitaire



- WRAS EPDMprx gasket compound approved



- OHSAS 18001 Occupational Health and Safety



- ISO 14001 Environmental Management



Exchange for good

Via Nassar, 46 - 37026 Pescantina (VR)
 Tel. +39 045 6750065 • Fax +39 045 6750118
 info@cipriani-phe.com
 cipriani-phe.com