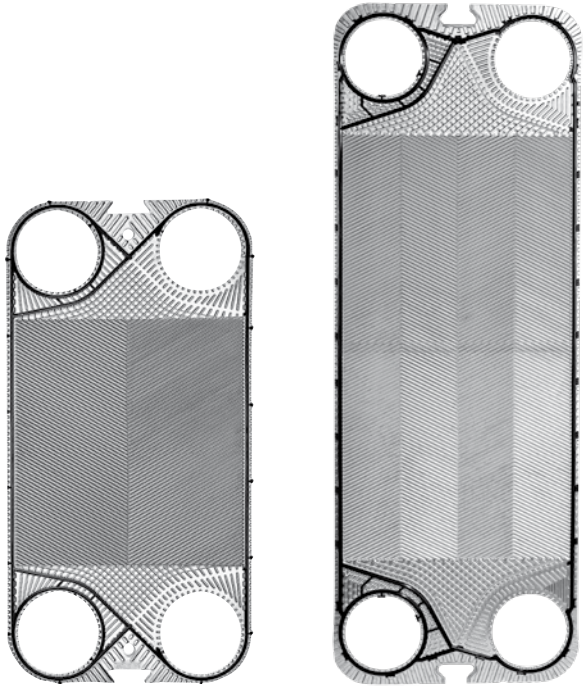


PRODUCT RANGE DN 200+

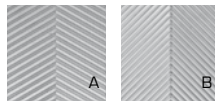
STANDARD OR CUSTOMIZED





Product Range	S650+		S990+	
Exchange area [m ²]	0,606		0,972	
Width [mm]	678		668	
Height [mm]	1340		1825	
Connections diameter	DN200 8"		DN200 8"	
Channel capacity [l]	2,109		2,399	
Tightening quote [mm]	3,3		3,1	
Plate weight (with gasket) [Kg]	3,18		4,5	
Corrugation angle	A/B		A/B	
Max. water flowrate [m ³ /h]	800		730	
PS=> Max working pressure [bar]	10	16	10	16

Ex art. 3.3 D.Lgs. 93 of 25/02/2000 in accordance with Directive 97/23/CE.
Announced pressures are referred to AISI 316L plates.



Plates are available in two thermal lengths (A/B)

DN32

DN50

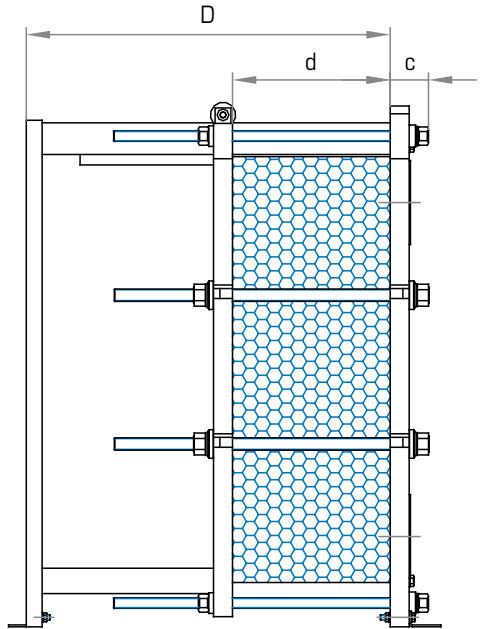
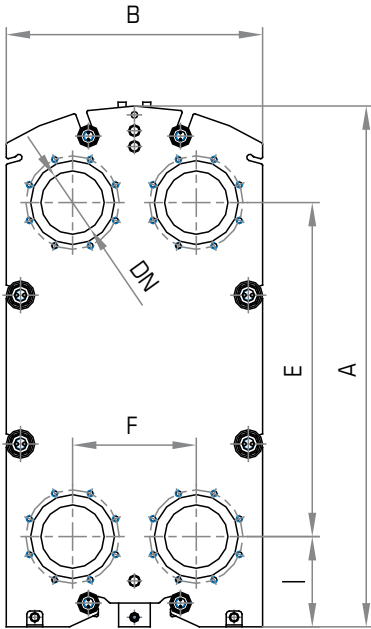
DN65

DN100

DN150

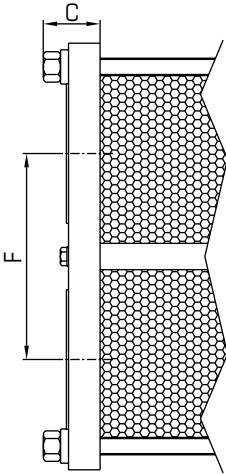
DN200

Frames dimensions



	S650+				S990+			
A	1645				2206 2190			
B	810				790			
E	1055				1536			
F	391				396			
I	285				285			
Np max	151	251	351	551	151	251	351	551
D max	1150	1750	2150	3060	1160	1760	2160	3060
d (A-A)	3,3 x Np				3,1 x Np			
DN	DN200 8"				DN200 8"			
A-A B-B C-C E-E U-U V-V	PS10		PS16		PS10		PS16	
	123		133		111		121	
A-A B-B C-C E-E	4		4		4		4	
U-U V-V	0		0		0		0	

All dimensions are in mm - Np = number of plates



A-A

Studded ports
Rubber lining
EN 1092-1.

B-B

Studded ports
AISI 316 lining
EN 1092-1.

U-U

Studded ports
Unlined
EN 1092-1.

C-C

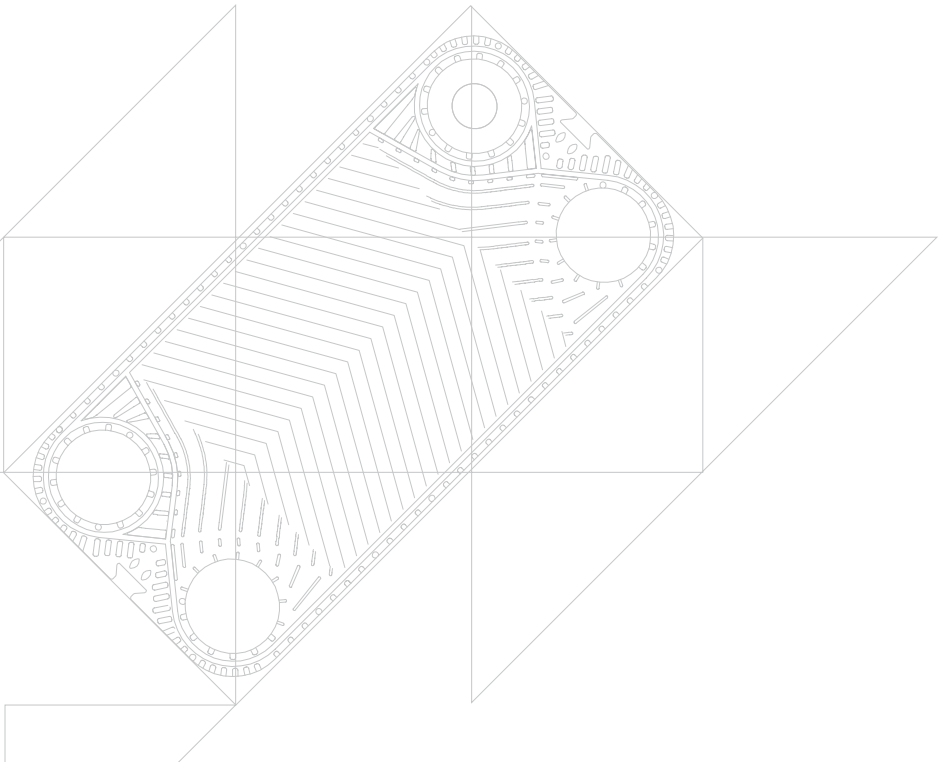
Studded ports
Rubber lining
ANSI
(metric thread).

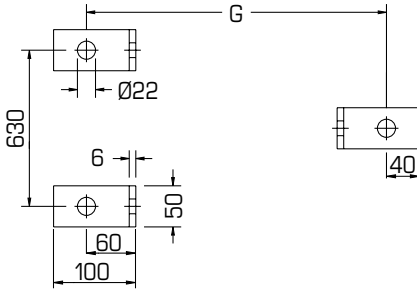
E-E

Studded ports
AISI 316 lining
ANSI
(metric thread).

V-V

Studded ports
Unlined
ANSI
(metric thread).





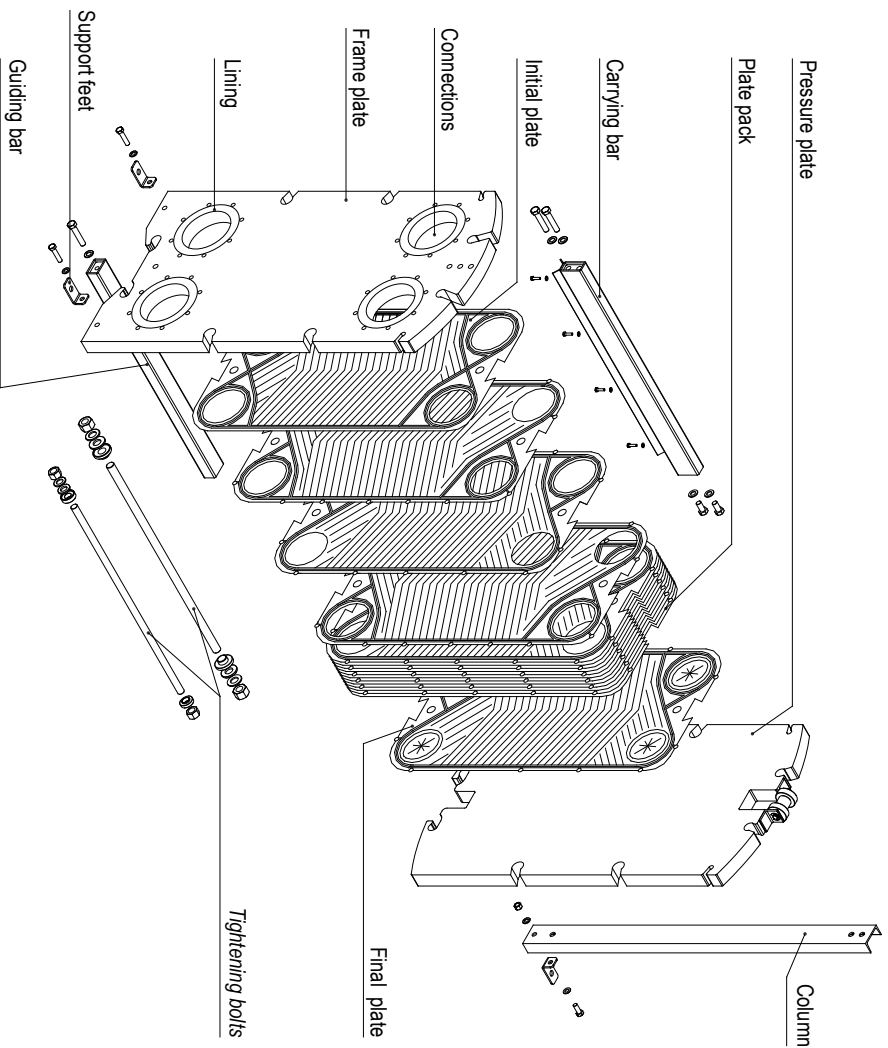
GxH	PS10	PS16
S650+		
Max 151p	1286	1296
Max 251p	1886	1896
Max 351p	2286	2296
Max 551p	3196	3196
GxH	PS10	PS16
S990+		
Max 151p	1277	1287
Max 251p	1877	1887
Max 351p	2277	2287
Max 551p	3177	3187

Materials

		S650+	S990+
Plates	AISI 304	●	●
	AISI 316L	●	●
	254 SMO		
	Titanium	●	●
Gaskets	NBR	●	●
	EPDM Prx.	●	●
	FPM	●	
	HNBR	●	
Frames	Carbon steel	●	●
	AISI 304, clad		
Connections	A-A B-B C-C E-E U-U V-V	●	●
Gaskets material maximum temperatures			
NBR	-20 °C		110 °C
EPDM Prx.	-20 °C		160 °C
FPM	-20 °C		200 °C
HNBR	-20 °C		160 °C

The temperatures must be considered not applicable in all working conditions.

Component blow-up drawings Models S650+, S990+



CERTIFICATIONS APPROVALS



- ISO EN 9001:2015
European Quality Certificates
- PED 2014/68/UE
Pressure Equipment Directive
Module B, D1 & D (up to Risk Cat. IV)



- ACS
Attestation de Conformité Sanitaire



- WRAS
EPDM/px gasket compound approved



- OHSAS 18001
Occupational Health and Safety



- ISO 14001
Environmental Management

MADE IN ITALY

