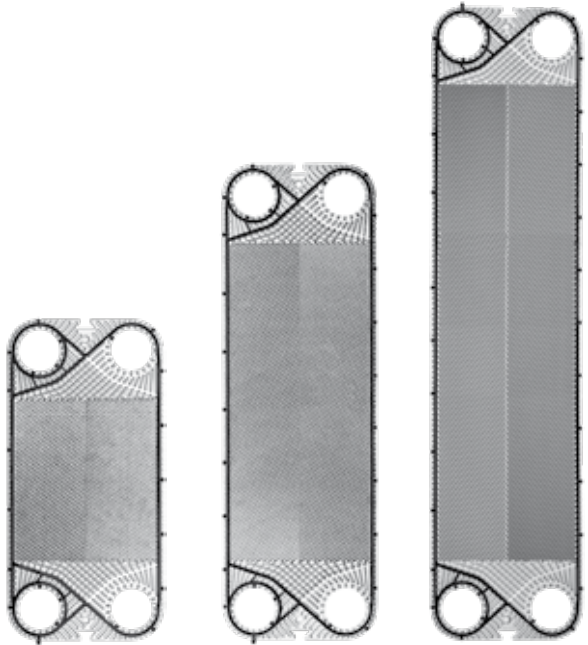




**PRODUCT RANGE DN 100+**

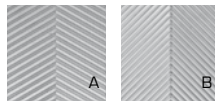
**STANDARD OR CUSTOMIZED**





Product Range	P300+			P450+			P700+		
Exchange area [m <sup>2</sup> ]	0,268			0,482			0,697		
Width [mm]	425			425			425		
Height [mm]	877			1322			1767		
Connections diameter	DN100 4"			DN100 4"			DN100 4"		
Channel capacity [l]	0,766			1,217			1,669		
Tightening quote [mm]	3,1			3,1			3,1		
Plate weight (with gasket) [Kg]	1,42			2,21			3,02		
Corrugation angle	A/B			A/B			A/B		
Max. water flowrate [m <sup>3</sup> /h]	240			240			240		
PS=> Max working pressure [bar]	10	16	25	10	16	25	10	16	

Ex art. 3.3 D.Lgs. 93 of 25/02/2000 in accordance with Directive 97/23/CE.  
Announced pressures are referred to AISI 316L plates.



Plates are available in two thermal lengths (A/B)

DN32

DN50

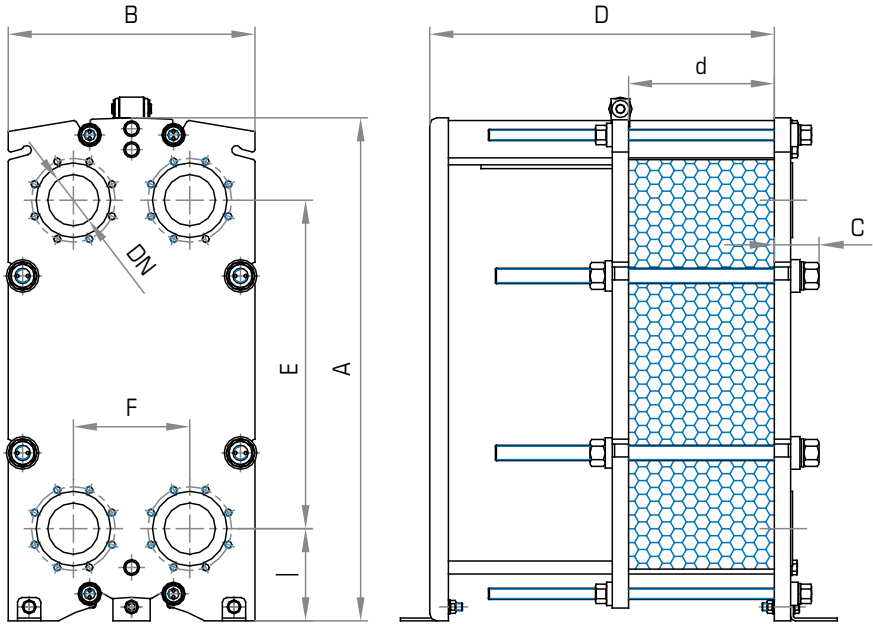
DN65

DN100

DN150

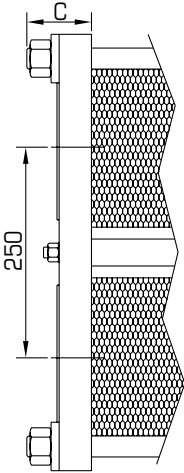
DN200

# Frames dimensions



	S300+				S450+				S700			
A	1080				1525				1970			
B	530				530				530			
E	705				1150				1595			
F	250				250				250			
I	198				198				198			
Np max	101	201	301	401	101	201	301	401	101	201	301	401
D max	740	1240	1740	2240	750	1250	1750	2250	750	1250	1750	2250
d (A-A)	3,1 x Np				3,1 x Np				3,1 x Np			
DN	DN100 4"				DN100 4"				DN100 4"			
A-A B-B C-C E-E U-U V-V	PS10	PS16	PS25		PS10	PS16	PS25		PS10	PS16		
	96	101	111		96	101	111		96	101		
A-A B-B C-C E-E	Cl	4			Cl	4			Cl	4		
U-U V-V	Cl	0			Cl	0			Cl	0		

All dimensions are in mm - Np = number of plates



**A-A**

Studded ports  
Rubber lining  
EN 1092-1

**B-B**

Studded ports  
AISI 316 lining  
EN 1092-1

**U-U**

Studded ports  
Unlined  
EN 1092-1.

**C-C**

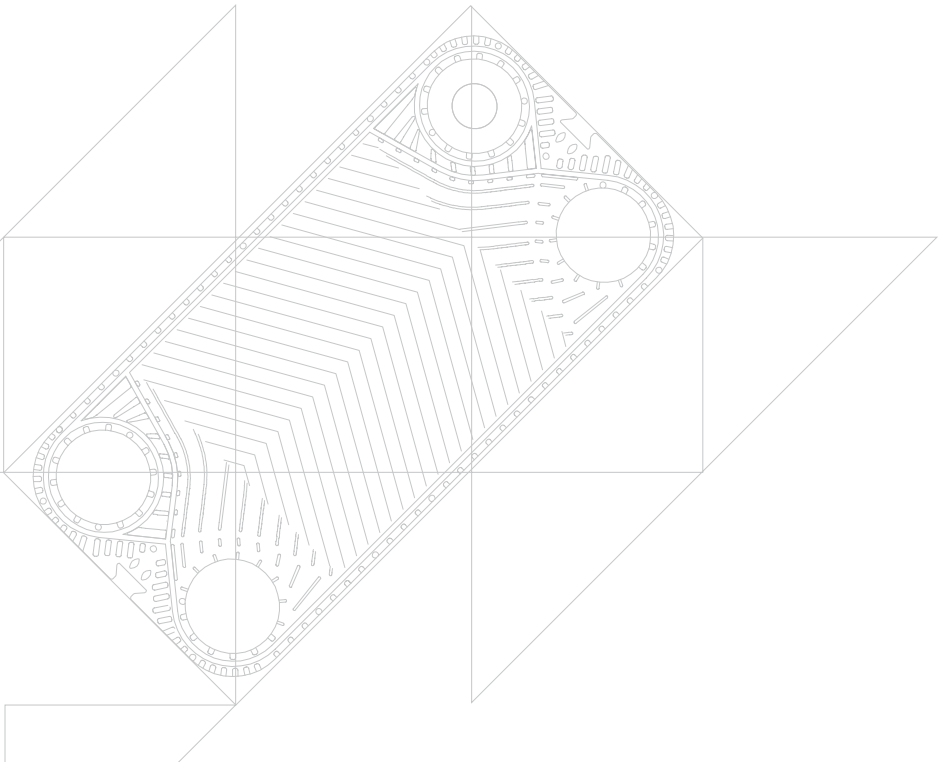
Studded ports  
Rubber lining  
ANSI  
(metric thread).

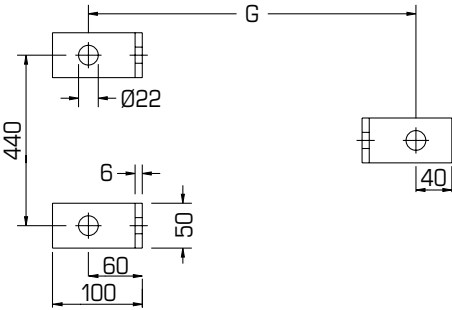
**E-E**

Studded ports  
AISI 316 lining  
ANSI  
(metric thread).

**V-V**

Studded ports  
Unlined  
ANSI  
(metric thread).





GxH	PS10	PS16	PS25
<b>S300+</b>			
Max 101p	858	863	873
Max 201p	1358	1363	1373
Max 301p	1858	1863	1873
Max 401p	2358	2363	2373
GxH	PS10	PS16	PS25
<b>S450+ / S700+</b>			
Max 101p	861	866	876
Max 201p	1361	1366	1376
Max 301p	1861	1866	1876
Max 401p	2361	2366	2376

## Materials

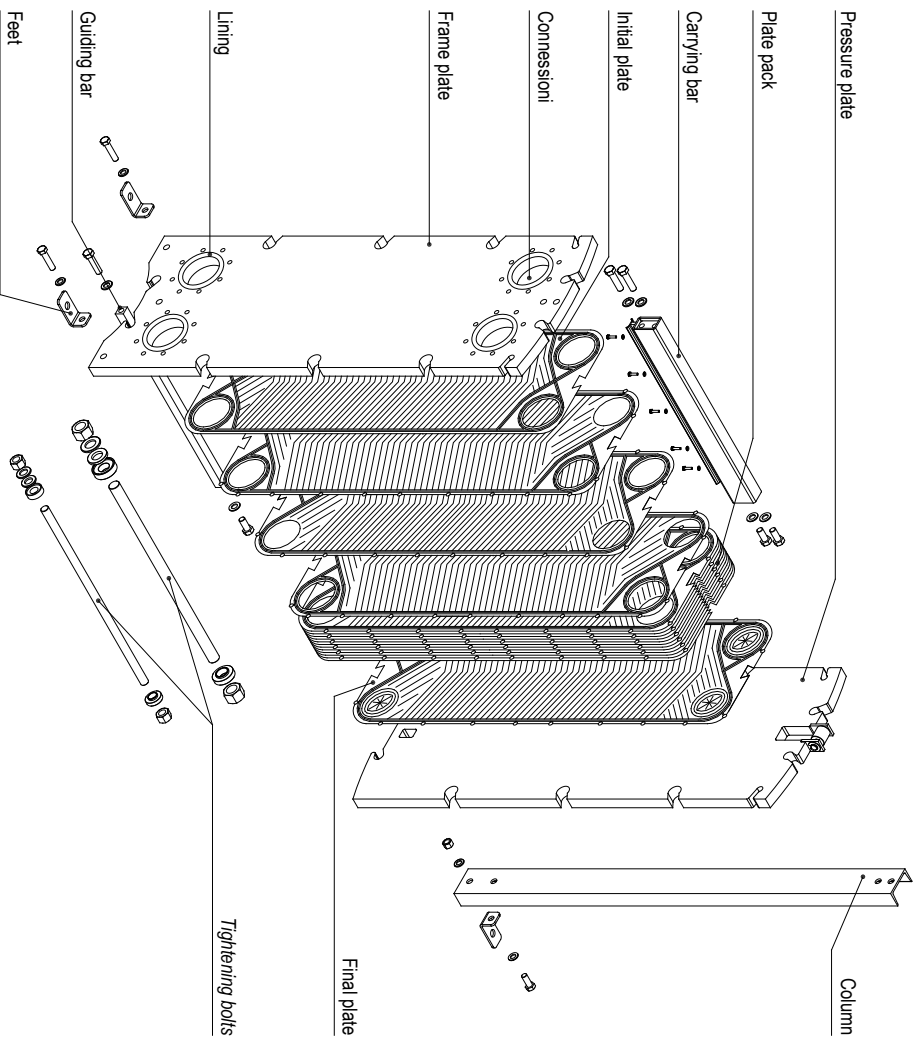
		S300+	S450+	S700+
Plates	AISI 304	●	●	●
	AISI 316L	●	●	●
	254 SMO	●	●	●
	Titanium	●	●	●
Gaskets	NBR	●	●	●
	EPDM Prx.	●	●	●
	FPM	●	●	●
	HNBR	●	●	●
Frames	Carbon steel	●	●	●
	AISI 304, clad	●	●	●
Connections	A-A B-B C-C E-E U-U V-V	●	●	●

### Gaskets material maximum temperatures

NBR	-20 °C	110 °C
EPDM Prx.	-20 °C	160 °C
FPM	-20 °C	200 °C
HNBR	-20 °C	160 °C

The temperatures must be considered not applicable in all working conditions.

# Component blow-up drawings Models S300+, S450+, S700+



## CERTIFICATIONS APPROVALS



- ISO EN 9001:2015  
European Quality Certificates
- PED 2014/68/UE  
Pressure Equipment Directive  
Module B, D1 & D (up to Risk Cat. IV)



- ACS  
Attestation de Conformité Sanitaire



- WRAS  
EPDM/px gasket compound approved



- OHSAS 18001  
Occupational Health and Safety



- ISO 14001  
Environmental Management

MADE IN ITALY

