

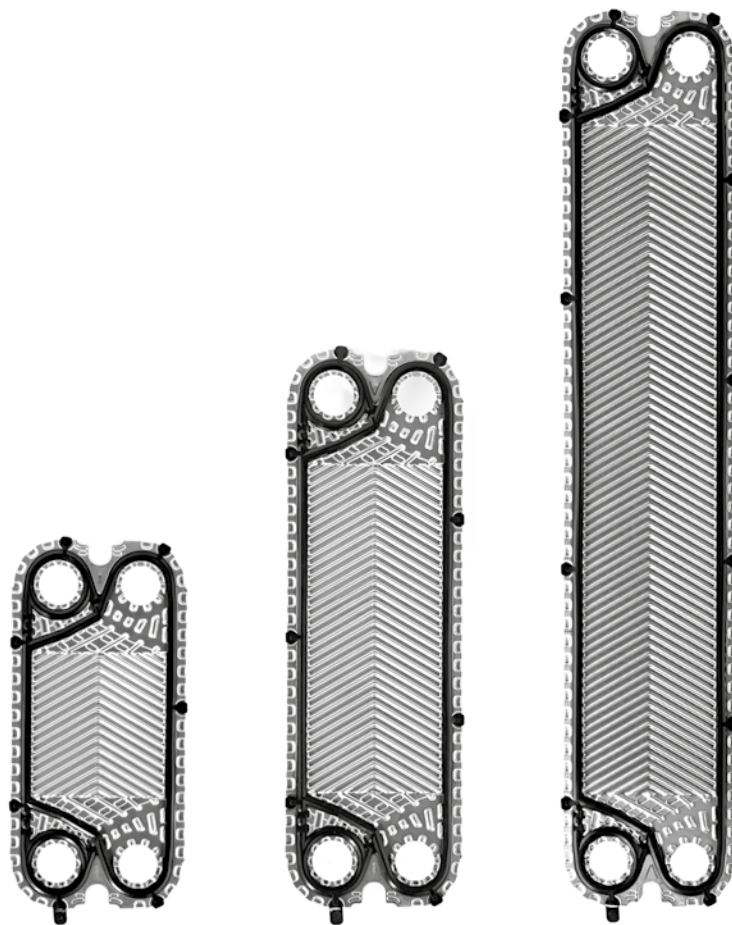


GAMMA PRODOTTI DN 32+

STANDARD O PERSONALIZZABILI



www.cipriani-phe.com



Gamma Prodotti	P020+				P040+				P080+			
Area di scambio [m ²]	0,021				0,041				0,081			
Larghezza [mm]	145				145				145			
Altezza [mm]	305				455				740			
Diametro connessioni	DN32 1"1/4				DN32 1"1/4				DN32 1"1/4			
Capacità canale [l]	0,063				0,103				0,181			
Quota di serraggio [mm]	2,9				2,9				2,9			
Peso piastra (con guarnizione) [Kg]	0,18				0,27				0,45			
Angolo di corrugazione	A				A				A			
Portata max d'acqua [m ³ /h]	19				19				19			
PS=> Pressione max di esercizio [bar]	6	10	16	25	6	10	16	25	6	10	16	25

Ex art. 3.3 D.Lgs. 93 del 25/02/2000 in applicazione Direttiva 97/23.
I valori di pressione indicati si riferiscono a piastre AISI 316L.

DN32

DN50

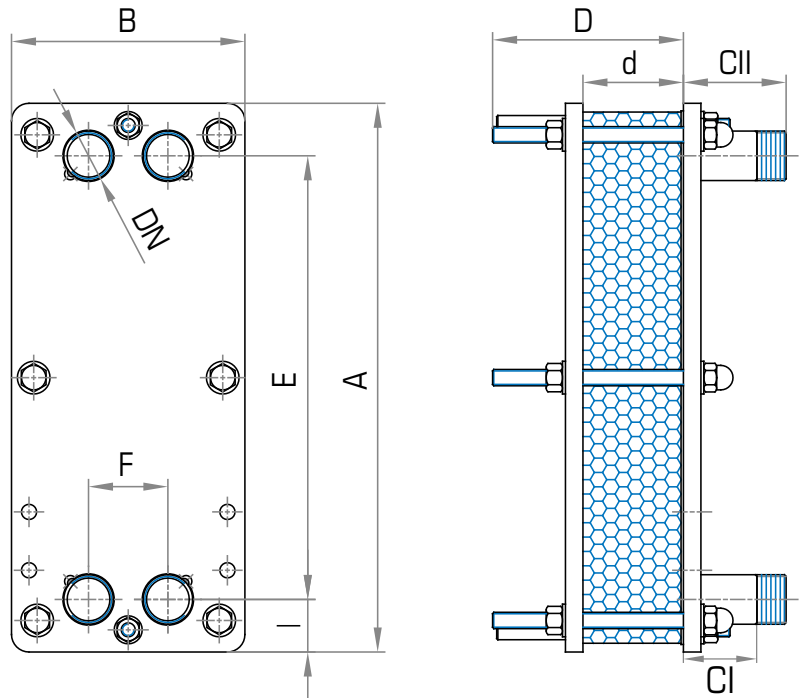
DN65

DN100

DN150

DN200

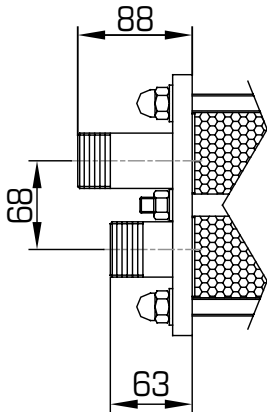
Dimensioni telai



		S020+			S040+			S080+			
A		320			470			755			
B		200			200			200			
E		230			380			665			
F		68			68			68			
I		45			45			45			
Np max		29	49	75	29	49	75	29	49	75	101
D max		169	269	469	169	269	469	169	269	469	580
d (J-J)		2,9 x Np+2			2,9 x Np+2			2,9 x Np+2			
DN		DN32 1"1/4			DN32 1"1/4			DN32 1"1/4			
J-J	C I	63			63			63			
	C II	88			88			88			
M-M	C	73			73			73			
J-M	C I	59			59			59			
	C II	73			73			73			
Y-Y	C I	63			63			63			
	C II	118			118			118			
X-X K-K	C I	180			180			180			
	C II	176			176			176			

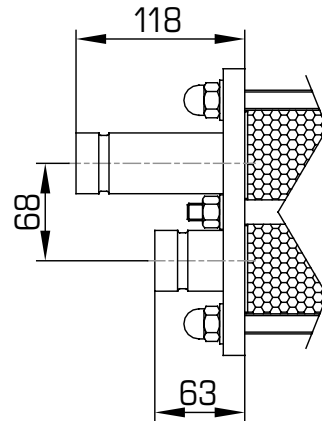
Tutte le dimensioni sono in mm - Np = numero di piastre

Disegni degli attacchi



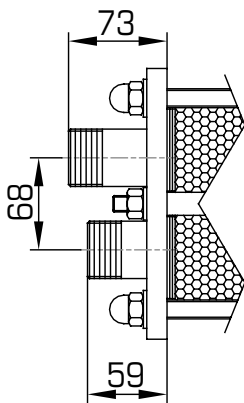
J-J

Attacchi mobili filettati maschio in AISI 316.



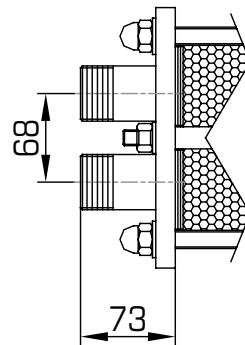
Y-Y

Attacchi mobili a estremità scanalata in AISI 316.



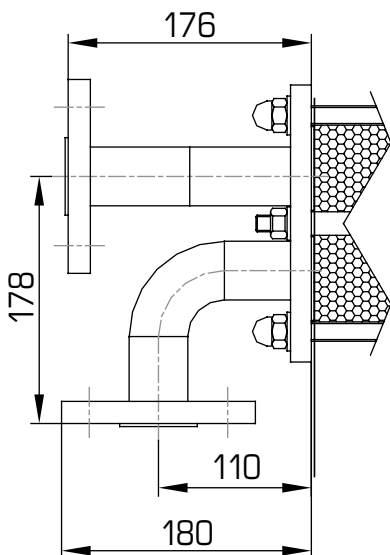
J-M

Attacchi mobili filettati maschio in AISI 316 e PP.



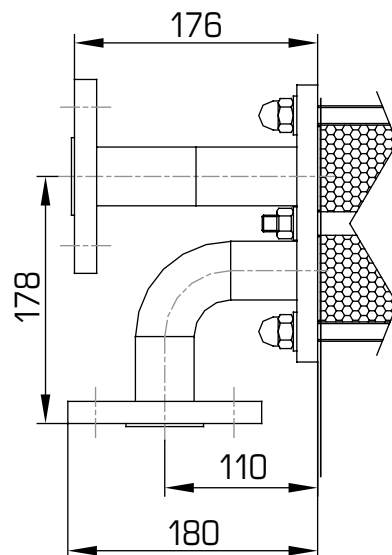
M-M

Attacchi mobili filettati maschio in PP.



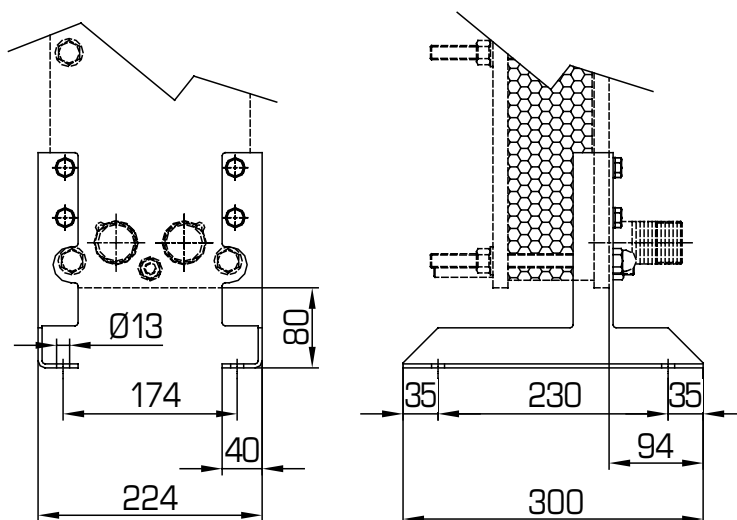
X-X

Flange mobili in AISI 304 (EN 1092-1). Tubo in AISI 316.



K-K

Flange mobili in acciaio al carbonio verniciato (EN 1092-1). Tubo in AISI 316.



Materiali

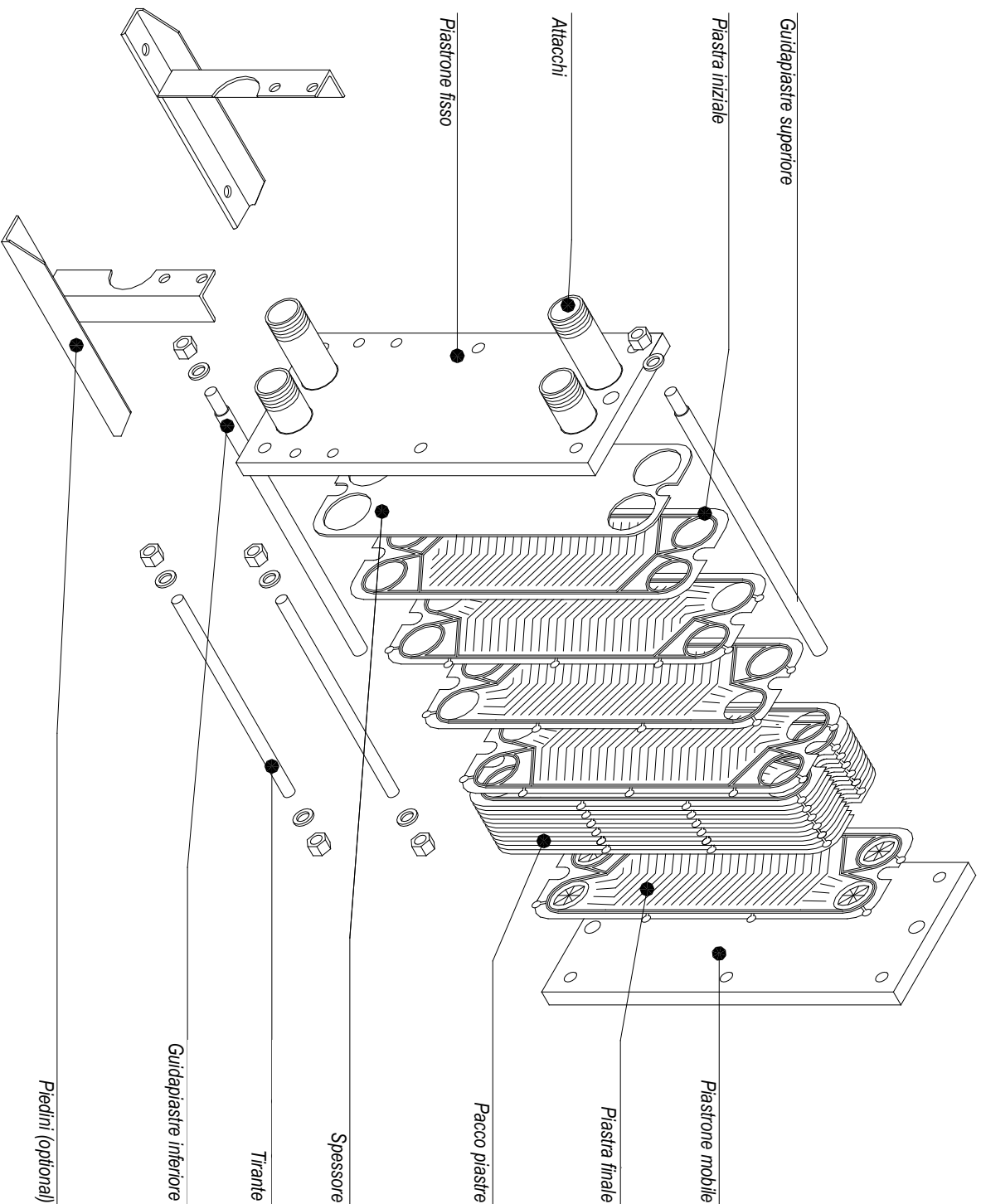
		S020+	S040+	S080+
Piastre	AISI 304	●	●	●
	AISI 316L	●	●	●
	254 SMO	●	●	●
	Titanio	●	●	●
Guarnizioni	NBR	●	●	●
	EPDM Prx.	●	●	●
	FPM	●	●	●
	HNBR	●	●	●
Telai	Acciaio Carbonio	●	●	●
	AISI 304, pieno		●	●
Attacchi	J-J	●	●	●
	Y-Y	●	●	●
	J-M	●	●	●
	M-M	●	●	●
	X-X	●	●	●
	K-K	●	●	●

Materiali guarnizioni e temperature massime

NBR	-20 °C	110 °C
EPDM Prx.	-20 °C	160 °C
FPM	-20 °C	200 °C
HNBR	-20 °C	160 °C

Le temperature devono essere considerate non applicabili in tutte le condizioni di lavoro.

Esploso componenti Modelli SO20+, SO40+, SO80+



CERTIFICATIONS APPROVALS



- ISO EN 9001:2015
European Quality Certificates
- PED 2014/68/UE
Pressure Equipment Directive
Module B, D1 & D (Up to Risk Cat. IV)



- ACS
Attestation de Conformité Sanitaire



- WRAS
EPDM/px gasket compound approved



- OHSAS 18001
Occupational Health and Safety



- ISO 14001
Environmental Management

MADE IN ITALY



www.cipriani-phe.com